

THE VIPER[®] FAMILY

VIPER[®]

Full HD
1920x1080
FIBER FREE



VIPER[®] light

With 30 m (100 ft) hybridhose 3/8" "
w x d x h: 66 x 24 x 73 cm (26 x 9,5 x 29 inch)
Weight 29 kg (64 lbs) including 30 m (100 ft) hybridhose (3/8")



VIPER - the rugged, professional tool for **cleaning and inspecting branched pipes in one run**

KEY FEATURES (all VIPER Models)

- Pipe Sizes 3"-24" (DN 75-600)
- Passes through and steers into multiple 45 deg bends in lines 3" (DN 75) and larger
- Passes through and steers into multiple 90 deg bends in lines 4" (DN 100) and larger
- working pressure up to 4350psi (300 BAR)
- Hose diameter 3/8" (DN 10)
- Required water supply 1600psi (110 BAR) 8 gpm (30 l/min)
- fresh water and recycled water operation



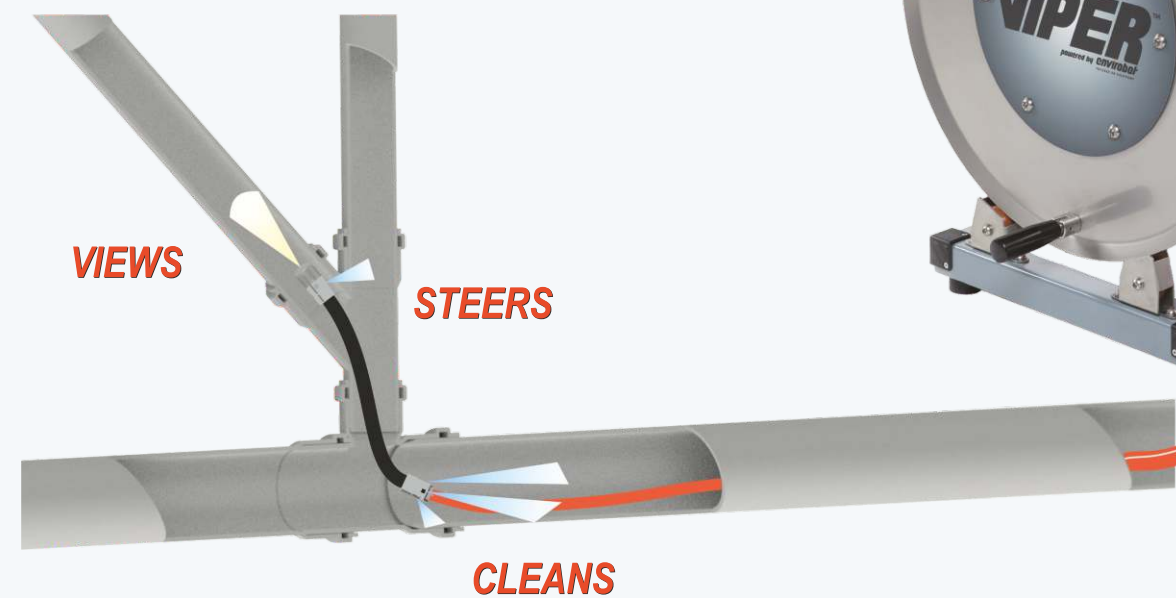
VIPER[®] compact

With 60 m (200 ft) hybrid hose 3/8" "
w x d x h: 58 x 52 x 70 cm / 23 x 20 x 28 inch (handle retracted)
w x d x h: 58 x 52 x 110 cm / 23 x 20 x 43 inch (handle extended)
Weight 53 kg (119 lbs) incl. 60 m (200 ft) hybrid hose 3/8"



VIPER[®] long range

With 80 m (265 ft) hybrid hose 3/8" "
w x d x h: 58 x 64 x 70 cm / 23 x 25 x 28 inch (handle retracted)
w x d x h: 58 x 64 x 110 cm / 23 x 25 x 43 inch (handle extended)
Weight 63 kg (139 lbs) incl. 80 m (265 ft) hybrid hose 3/8"



THE VIPER[®] COMPONENTS AND DETAILS



CONTROL UNIT

- Rugged, waterproof aluminum housing
- Swivel mount bracket with quick-change system
- Exchangeable Li-Ion battery with 3 hours battery life
- 12 V/24V DC (vehicle) 110 V - 240 V AC (shoreline)
- High-resolution 10" display, sunlight readable, scratch-resistant screen
- Video- and photo capturing in HD on thumbdrive, 512 GB max. capacity
- Text overlay with memory for configurable pages, words and status lines
- Data overlay for cleaning pressure, camera internal pressure, distance counter, rotation angle, inclination, battery status, time, date
- Rugged, waterproof keyboard for convenient typing
- large buttons for video and photo recording, zoom, microphone, locator sonde, LED control, etc.
- Headset connection for voice recording

Optional:
analog Video-output



HOSE TROLLEY (VIPER compact + VIPER long range)

- rugged, ergonomic aluminum frame, powder coated
- Extendable telescopic handle with swivel mount for the control unit
- Stepless reel brake, ball valve, tool compartment
- anti flat wheels + load assist slide rail
- 1/2" size fitting for connecting to jetters
- Umbrella with quick-coupling for easy mounting on the hose trolley

Optional:

Electric drum drive integrated in the hose trolley for convenient hose winding



accessories



spare battery



charging bay



hose connector
(to connect 2 hybrid hoses)



12/24VDC power adapter for car and truck

HYBRIDHOSE

- thermoplastic HP jetter hose 3/8" (DN 10)
- integrated camera cable
- rated 4300 psi (300 BAR)
- little pressure loss, abrasion resistant, floatable and low friction
- same quick connects on each side
- reversible for even wear



CAMERA

- Full HD live camera 1080 x 1920 with digital zoom
- 160° wide-angle lens with 0.16" (4mm) sapphire glass
- dimmable power-LED's for pipes up to 24" (DN 600mm)
- Sensor for inclination and rotation indication
- locator Sonde 512 Hz / 640 Hz
- integrated forward jetting nozzle with exchangeable nozzle
- depth rating 330 ft (100 m) with internal pressure monitoring
- stainless steel body with impact protection
- detachable from the Flex Segment thanks to the modular design
- diameter 1.6" (40mm) - length 1.6" (40mm)
- spacer for pipes larger 4" (DN 100)



Full HD
1920x1080
FIBER FREE

FLEX SEGMENT

- easy to steer into branches by simply turning the hose
- steering nozzle with exchangeable ceramic nozzle inserts
- integrated valve to switch the forward jetting nozzle
- rugged, highly flexible protective hose
- 6 pcs. cleaning and forward thrust nozzles, 30° angle
- exchangeable ceramic nozzle inserts, suitable for recycling water
- wear-resistant stainless steel components
- connection with quick connects

Optional:

Flex Segment with rotating nozzle and 3 interchangeable nozzle bodies in a rugged case

